

An extensive pedestrian network links the Old Boiler and Kiln, Woodworkers Cottage, Playgrounds, Carparks and adjacent Mill Place and new library.

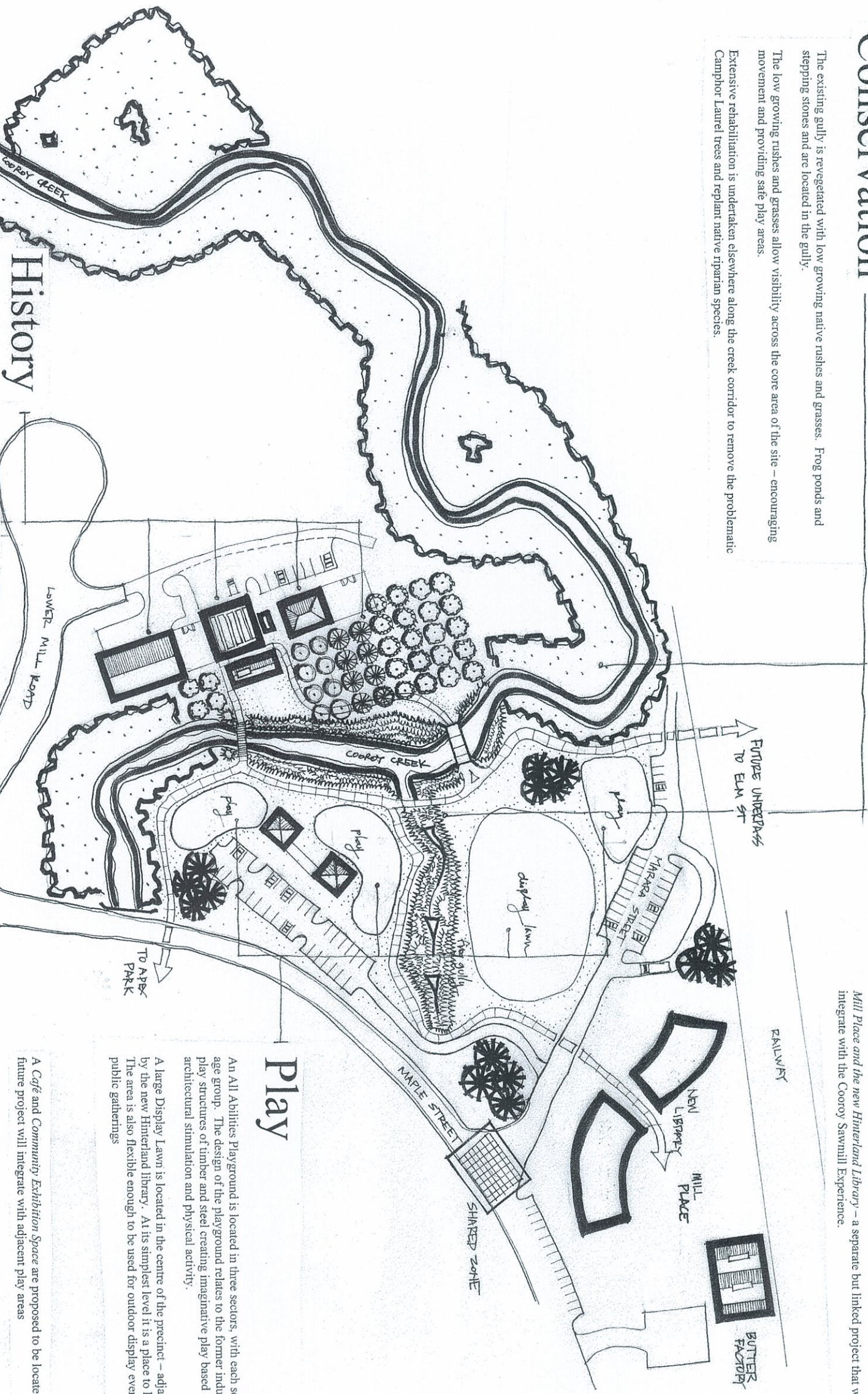
Mill Place and the new Hinterland Library – a separate but linked project that will overlook and integrate with the Cooroy Sawmill Experience.

Conservation

The existing gully is revegetated with low growing native rushes and grasses. Frog ponds and stepping stones are located in the gully.

The low growing rushes and grasses allow visibility across the core area of the site – encouraging movement and providing safe play areas.

Extensive rehabilitation is undertaken elsewhere along the creek corridor to remove the problematic Campchor Laurel trees and replant native riparian species.



History

This area provides a collection of building and activities that celebrate Cooroy's rich history in timber.

The Old Boiler Interpretative Display - a public walkway takes you through the heart of the boiler building, with viewing windows through to the adjacent kilns. The remarkable fabric and fixtures of the buildings provide the real and palpable story of Cooroy's timber history.

Groves of selected timber trees in a woodland setting link the trees milled on the site with their indigenous usefulness, their distribution across the hinterland prior to milling and their specific construction use in buildings in Queensland.

Well designed information signage along the walkways tells the stories of the buildings, the site and the timber groves.

The Woodworkers Cottage and Workshop in the adjacent former kilns are used by their 100 plus members for woodworking activity.

The existing Campchor Laurel Initiative are turning the beautiful but problematic campchor laurel trees into products.

Play

An All Abilities Playground is located in three sectors, with each sector relating to an ability level / age group. The design of the playground relates to the former industrial use of the site, with large play structures of timber and steel creating imaginative play based around kinetic movement, architectural stimulation and physical activity.

A large Display Lawn is located in the centre of the precinct – adjacent to play areas and overlooked by the new Hinterland library. At its simplest level it is a place to kick a ball or throw a Frisbee. The area is also flexible enough to be used for outdoor display events such as markets, festivals and public gatherings.

A Cafe and Community Exhibition Space are proposed to be located in the existing cottages. This future project will integrate with adjacent play areas



Cooroy Lower Mill Domain

History Play Conservation

Shawn Joseph Walsh 29/8/17 Rev 01